

20

15

2015

2015

2015

CELEBRATING THE
20TH ANNIVERSARY
OF THE CENTER
FOR FAMILIES
& THE 15TH
ANNIVERSARY OF
THE MILITARY
FAMILY RESEARCH
INSTITUTE

N

O

/

I

U



LIVING THEIR DREAM



SHELLEY MACDERMID
WADSWORTH

DIRECTOR OF THE CENTER
FOR FAMILIES AND
THE MILITARY FAMILY
RESEARCH INSTITUTE

A little more than 20 years ago, a group of creative and dedicated individuals gathered together to imagine how they might use their collective impact to make a difference for families far into the future.

These individuals wanted families to be a highly visible focus at the university, right alongside the engineering, agricultural and other foci that were already so prominent. They wanted our college to be seen as a leader on and off campus. They wanted women to be recognized as both influential and important in the philanthropic realm. Most importantly, they wanted to see powerful decision makers whose actions deeply affect families in our society be more guided by the scientific evidence discovered by researchers at Purdue and elsewhere. On a remarkable day in 1993, their dreams were given wings and the Center for Families was born.

A few years later, the opportunity emerged to extend the work of the center into a new arena of influence, using the center's scientific, policy and engagement expertise to work on behalf of the families who volunteer to serve in our nation's armed forces. And so, the Military Family Research Institute came into being.

This anniversary gives us occasion to look back and appreciate all that has happened as a result of those early dreams: the contributions made by students who were able to complete their educations, the discoveries made by scholars who were able to pursue new avenues of research, the decisions made by employers and policy makers who became more knowledgeable about the state of scientific evidence, and the programs shaped by research conducted here, just to name a few.

Anniversaries are also occasions for dreaming about the future. The groundwork is already being laid for what will be celebrated 5, 10 and 20 years from now. Twenty years ago, there was nothing more than a lofty dream shared by a few creative and dedicated individuals. Today, the Center for Families and the Military Family Research Institute have touched the lives of literally millions of families, showing that dreams do come true. Let's keep dreaming!

IMPACTING FAMILIES



DORAN FRENCH
PROFESSOR AND
DEPARTMENT HEAD,
HUMAN DEVELOPMENT
AND FAMILY STUDIES

We are very proud that the Center for Families and the Military Family Research Institute were founded within the Department of Human Development and Family Studies at Purdue University. They epitomize what it means to work on behalf of families.

The hallmark of these organizations is their great collaborations; at Purdue, across academia and around the country. The Center for Families and MFRI have partnered with faculty members within our department, Purdue and elsewhere to create bridges among academia and policymakers, improve care for military children around the world, and strengthen family support programs. The Center for Families works with higher education institutions, government organizations, and corporations to support and present the latest research on families. In addition to the research it conducts, MFRI partners with community organizations across the country to share knowledge about best practices and current research.

On behalf of the Department of Human Development and Family Studies at Purdue University, I welcome you to explore this publication to learn more about what the Center for Families and MFRI are doing in their work — what they have accomplished, how they are impacting families today, and where they are headed next. I hope you will join me in wishing them both a happy anniversary and great wishes for future success.

The College of Health and Human Sciences at Purdue University is delighted to join the celebration of the 20th anniversary of the Center for Families and the 15th anniversary of the Military Family Research Institute (MFRI). Together, these organizations are embracing Purdue's core missions of discovery, learning and engagement and using them to work toward improving the lives of families around Indiana and across the country.

The Center for Families and MFRI believe that strong families are the key to creating strong communities. They are dedicated to conducting and disseminating high quality research that will allow employers, higher education institutions, policy makers, community leaders and others to ensure the success of the family, helping its members become the best employees, students and citizens they can be.

Looking toward the future, I hope you will consider how you can get involved with these two organizations, whether it's becoming more familiar with their work by visiting their websites or joining the conversation on social media, engaging with their activities, or even offering your support in other ways by providing time, resources or serving as an advocate and sharing this powerful story with others.



CHRISTINE M. LADISCH
DEAN OF THE COLLEGE
OF HEALTH AND
HUMAN SCIENCES

PREPARING FOR THE FUTURE



ABOUT CFF & MFRI

In 1994, the Center for Families was established within the Department of Child Development and Family Studies in the School of Consumer and Family Sciences (now the Department of Human Development and Family Studies in the College of Health and Human Sciences) at Purdue University. Its mission is to help improve the quality of life for families. CFF serves as a catalyst to integrate outreach, teaching, and research activities that support families. This is accomplished through increased and enhanced collaborations among academic disciplines, professionals, policymakers, corporations and community organizations.

In 2000, the Military Family Research Institute was created with funding from the Department of Defense (DoD) with the mission of conducting policy-relevant research. With funding from Lilly Endowment Inc. and other partners, MFRI has expanded its mission to include outreach and engagement. MFRI works to extend and strengthen the ability of military and civilian organizations to help military families. This is accomplished by designing and implementing outreach and engagement activities that assist military families, and by conducting research with and for military families that generates important new knowledge aimed at improving the lives of those who serve.



ANNIVERSARY WISHES FROM OUR COLLEAGUES

“The Center for Families has been important to me from its inception. Growing up my family was such an important part of my values formation. I did not realize it at the time, but the values that I perceived have become increasingly a part of my life. I realize the importance of a strong family support system in today’s changing lifestyles. My best to the Center for Families.” – Ruth Daniel Chappell, Center for Families Advocate

“Generating alternative and efficient solutions to the many issues families and the military face nowadays requires a systematic approach. We need to methodically acquire and integrate information that allows us to craft programs that translate such knowledge into actions that benefit others. Good intentions and an armchair approach are not enough. Intervention and research programs go hand-in-hand. Research sponsored by the Center for Families and MFRI has sponsored such scientific approach and allowed many of us to investigate families and military personnel to understand their situation and how it affects children, parents, and family functioning.” – German Posada, Associate Professor, Human Development and Family Studies, Purdue University

“No one understands more about the issues facing the military community than MFRI, nor is more adept at translating that deep knowledge into practical, actionable solutions.” – Geoffrey J. Deutsch, President & CEO, Armed Forces Services Corporation

“The Council on Foundations is fortunate to have developed a working relationship — a partnership — with the Purdue Military Family Research Institute to help us create valuable learning opportunities for our Veterans Philanthropy Exchange. Having access to the Institutes’s academic professionals, quality research, and thought leadership is invaluable to our efforts to build a body of contemporary knowledge for philanthropic investors about veterans and families’ needs.” – Stephanie J. Powers, Sr. Director for Policy and Partnerships, Council on Foundations

“The Military Family Research Institute is invaluable to providing critical data and well thought out analysis needed by organizations like the National Guard to respond to military families with the programs and resources needed to maintain a healthy family unit. Your longitudinal studies and continued research is vital to this effort.” – Marianne Watson, Brigadier General (Retired), Former Director Manpower and Personnel, National Guard Bureau

“The Center for Families at Purdue University has done a tremendous service for the field of Work and Family by developing the Kanter Award program. Thank you so much for raising the stature of the work-family field in general and for giving scholars a place to go to learn about and develop new directions for the field.” – Maureen Perry-Jenkins, Ph.D., Director, Center for Research on Families and Professor of Psychological and Brain Sciences

“Work-life researchers in the UK really value what you are doing to recognise and reward the excellent work in the field. Congratulations on your 20th anniversary - many more to come!” – Dr. Gail Kinman, CPsychol CSci AFBPS, Professor of Occupational Health Psychology, Director of the Research Centre for Applied Psychology Department of Psychology, University of Bedfordshire

“Congratulations! The partnership we have with MFRI has allowed us to serve military families and veterans better by providing invaluable training to hundreds of clinicians across the state of Georgia. MFRI’s role in supporting this training and improving access to treatment for the military population is crucial to our mission.” – Barbara O. Rothbaum, Ph.D., ABPP; Professor in Psychiatry; Director, Trauma and Anxiety Recovery Program; Paul A. Janssen Chair in Neuropsychopharmacology; Associate Vice Chair of Clinical Research; Emory University School of Medicine

MAKING A DIFFERENCE IN THE LIVES OF FAMILIES

Throughout their history, the Center for Families and the Military Family Research Institute have made significant contributions to improving the lives of families and the systems that surround them. Through a combination of research and outreach activities, they have generated new knowledge about families, improved day-to-day life for individual families, shaped communities to offer better support and even shaped the policies that affect families at the local, state and national levels. Below are just a few examples of their collective impact.

ON GENERATING AND SHARING KNOWLEDGE:

- » The Center for Families and MFRI have engaged over 100 faculty members across Purdue in projects that have added to the creation and dissemination of new knowledge about families.
- » The Center for Families and MFRI have trained more than 182 undergraduate and graduate students enrolled in colleges across Purdue's campus.
- » Thanks to donor gifts, the Center for Families has directly supported over 70 students and faculty in the early phases of their research which has allowed the center to explore ideas on the forefront of family issues.

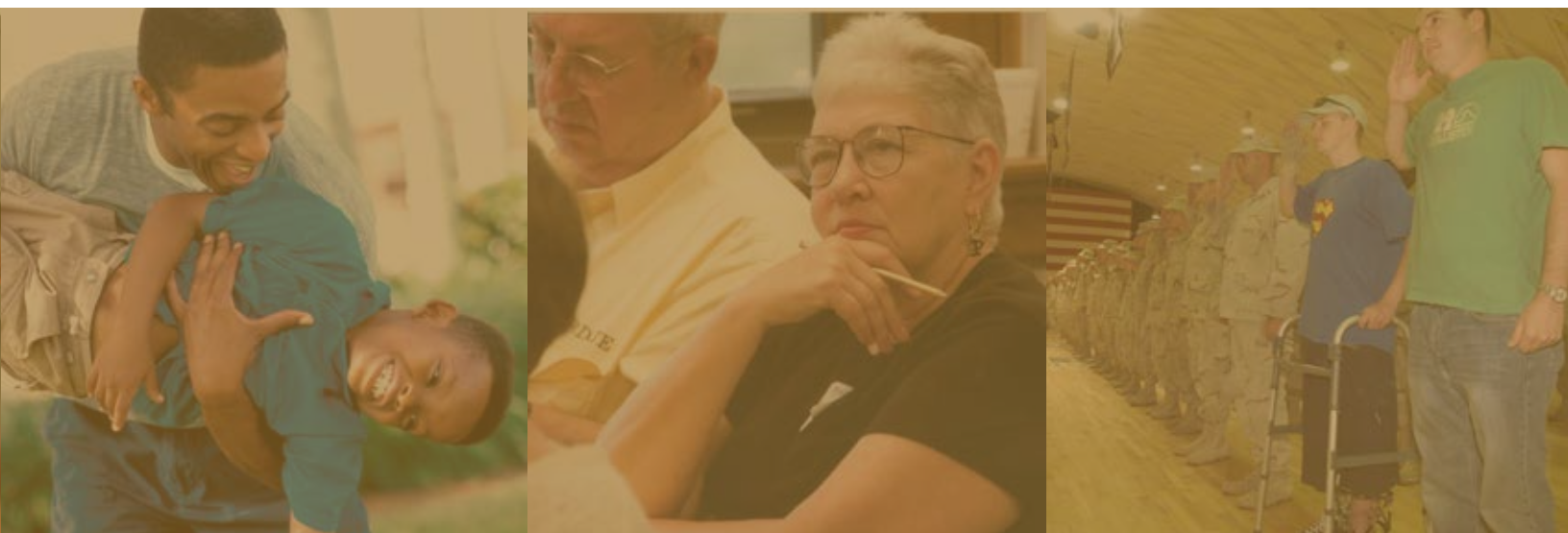


ON IMPACTING POLICY AND LEGISLATION:

- » Since 1999, the Center's Family Impact Seminars have educated Indiana state legislators about cutting-edge scientific evidence related to policies they are debating.
- » Each year, the Center for Families finds the best work-family research and researchers in the world, then educates corporate practitioners responsible for programs, practices and policies that affect more than four million employees and their families.
- » MFRI has become a resource to Congressional officials, testifying before Congress five times, providing 21 presentations to legislators and policy makers, and leading Science Roundtables for members of Congress and their staff.

ON CHANGING COMMUNITIES TO BETTER SUPPORT THEIR MEMBERS:

- » From its first funded project and grant received, the Center for Families has played a role in helping Indiana achieve a higher standard for childhood education and care in the state. Center-affiliated projects include the partnership with Indiana University to launch the Infant-Toddler Specialists of Indiana, and the Paths to QUALITY Program, which helps to raise the bar for the quality of care in childcare facilities across Indiana, both led by Professor Jim Elicker.
- » Since the launch of the Star Behavioral Health Providers initiative in 2011, more than 150 trainings have been held in 7 states to educate more than 5,000 participants in military culture and evidence-based treatments, who in turn serve more than 10,000 service members, veterans and family members.
- » In collaboration with Student Veterans of America, MFRI published and distributed *Success in 3-D For Student Veterans*, a resource guide available to the more than 1,000 SVA chapters nationwide serving as many as 40,000 student service members and veterans. This also led to MFRI directly training more 375 student leaders from 210 institutions in 44 states through SVA's national leadership conference and leadership summits.



AT-A-GLANCE: THE IMPACT OF THE CENTER FOR FAMILIES

- 1 . Raised the visibility of family research at Purdue, connecting faculty, students and staff who share interest in research on families.
- 2 . Supported faculty and student family researchers across campus as they conduct and disseminate research about families.
- 3 . Generated discovery, learning and engagement about families by successfully pursuing external support for research and projects.
- 4 . Influenced workplaces by bringing the best work-family research and researchers in the world to corporate practitioners who design and implement programs, practices and policies. Helped to sustain and promote programs of research by work-family scholars; and built bridges both among academic disciplines and between researchers and corporate practitioners.
- 5 . Influenced policies by educating Indiana state legislators about cutting-edge scientific evidence related to policies they are debating.

AT-A-GLANCE: THE IMPACT OF THE MILITARY FAMILY RESEARCH INSTITUTE

- 1 . Engaged Purdue University faculty, staff and students in research, evaluation, outreach and events, that have changed communities throughout and beyond Indiana in support of military and veteran families.
- 2 . Changed the face of higher education for student service members and veterans in Indiana, generating insights that are benefiting student service members and veterans across the country.
- 3 . Launched, compiled, contributed to and disseminated research about military families that has engaged scholars from around the world. MFRI efforts are helping to make sure that lessons learned from this war about military families remain visible and accessible to students and scholars in the future.
- 4 . Influenced state and national programs, policies and practices affecting military and veteran families.
- 5 . Brought change to the systems that support military and veteran families by building new ways to support military children dealing with deployment and reintegration, and improving the preparation of civilian mental health clinicians to treat military and veteran families.

ADVISORY COUNCIL MEMBERS

CFF

Ximena Arriaga, Ph.D.

Associate Professor of
Psychological Sciences
Purdue University

Lorene Burkhart

Founding Donor, Center for Families
Burkhart Network

Travis Dorsch, Ph.D.

Assistant Professor of Family, Consumer,
and Human Development & Health,
Physical Education, and Recreation
Utah State University

James Elicker, Ph.D.

Professor of Human Development
and Family Studies
Purdue University

Melissa Franks, Ph.D.

Associate Professor Human Development
and Family Studies
Purdue University

Charlotte Hawthorne

Consultant
Eli Lilly and Company, Global Diversity
and Inclusion

Sheila Klinker

Indiana State Representative
Indiana State Legislature

Betty Krejci

Senior Director of Major Gifts
Lewis & Clark College

Candice Lange

President
Lange Advisors

Xinran Lehto, Ph.D.

Associate Professor of Hospitality
and Tourism Management
Purdue University

Bob Miles

Advocate, CFF
Bob Miles & Associates

Joyce Beery Miles

Advocate, CFF
Joyce B. Miles & Associates

Debbie Myers Cook

Advocate, CFF
Certified Financial Planner

Edie Olson

President
Families First

Yvette Perry, Ph.D.

Director of Student Affairs, Career
Advising & Professional Development
The University of Toledo

Barbara Riggs

MSN, Therapist, Associate Professor
Indiana Association for Marriage
and Family Therapy/
Indiana-Wesleyan University

Jennifer Swanberg, Ph.D.

Professor of Social Work
University of Maryland

Dianna Wallace

Executive Director
Indiana Association for the Education
of Young Children

MFR I

Francesca Adler-Baeder, Ph.D., CFLE

Director, Center for Children, Youth,
and Families
Professor, Human Development and
Family Studies
Auburn University

Charlene D. Austin, M.S.

National Advisor/Advocate, Military Child
Education Coalition
National Advisor/Advocate, National
Military Family Association
Spouse, General Lloyd J. Austin III, Central
Command Commander, U.S. Army

Adrian Blow, Ph.D.

Associate Professor, Human Development
and Family Studies
Program Director, Couple and Family
Therapy Program
Michigan State University

Bob Bonwell

Founder
Veteran & Child Bonding Ranch Corp.

Cal Burleson

Vice President & General Manager
Indianapolis Indians

Ronald M. Davis, Ph.D.

Vice President for Instruction
John Wood Community College

Bob DelZoppo

Assistant Vice President Strategic
Technology Programs
SRC, Inc.

J. Eric Dietz, Ph.D., PE

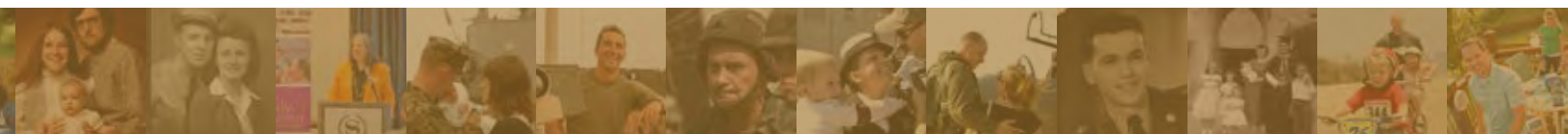
Director, Purdue Homeland
Security Institute
Associate Director, Purdue
e-Enterprise Center
Associate Professor, Computer and
Information Technology Department
Purdue University

Lt. Col. (Ret.) Jonathan Douglas

Senior Functional Analyst
QinetiQ North America

Lt. Gen. (Ret.) Robert E. Durbin

Vice President of Government Relations
ITT Exelis



“The Center for Families thoughtfully and constructively provides invaluable research and data on child well-being to elected officials and other civic leaders in the Hoosier State. The Military Family Research Institute, meanwhile, is delivering responsive resources for a growing population across our nation – the families of military personnel. The Center and the Institute effectively translate research into practical application to benefit children, families and the communities where they live.” – Bill Stanczykiewicz, President & CEO, Indiana Youth Institute

Ellen Galinsky

President and Co-Founder
Families and Work Institute (FWI)

Lara Galinsky

Senior Vice President
Echoing Green

**Capt. (Ret.) William S. Gripman, Jr.,
USN (RC)**

Managing Partner, Drive Consulting Group
President, Motor City Veterans Village

Christina J. Groark, Ph.D.

Associate Professor, Education
Co-director, Office of Child Development
University of Pittsburgh

**Rear Adm. (Ret.) Jeffrey Harbeson,
USN**

Deputy Director for Politico-Military
Affairs for Europe, NATO, and Russia
Strategic Plans and Policy Directorate,
Joint Staff

Maria Harbeson, CAPT, Nurse Corps

United States Navy Reserve
Spouse, Rear Adm. Jeffrey Harbeson

Andrew Koch, Ph.D.

Executive Vice President
John N. Gardner Institute for Excellence in
Undergraduate Education

Vic Lechtenberg, Ph.D.

Acting Executive Vice President
Academic Affairs and Provost
Purdue University

Patricia Lester, M.D.

Jane and Marc Nathanson Family Professor
Director, Families OverComing Under
Stress (FOCUS)
Co-director, Welcome Back Veterans UCLA
Family Resilience Center
Medical Director, Child and Family Trauma
Psychiatry Service
Semel Institute for Neuroscience and
Human Behavior
University of California, Los Angeles

Jane S. Link, Ed.D.

Former Director of Academic Advising and
Recruiting
Center for Adult and Part-Time Students
(CAPS)
Xavier University

Cpl. Bryan T. Morris

Project Engineer
Integra Construction, Inc.

COL (Ret.) Angela Pereira, Ph.D.

Former Regional Mental Health Consultant
Former Director, Europe Regional
Medical Command's Soldier & Family
Support Services
Former Member, Department of Defense
Mental Health Task Force
United States Army

**Brig. Gen. (Ret.) Belinda H. Pinckney,
M.P.A.**

President and Chief Executive Officer
Better Horizons and Possibilities (BHP)
Consulting, LLC

**Capt. (Ret.) Morgan T. Sammons,
Ph.D., USN**

Dean, California School of Professional
Psychology
Alliant International University

Trooper Sanders

Former Deputy Director of Policy to the
First Lady
Senior Advisor, HelloWallet
Founder, Wise Whisper Consulting

Lt. Gen. Keith Stalder, USMC, Retired

Founder, Keith Stalder and Associates

Nora Spinks

Chief Executive Officer
Vanier Institute of the Family

**COL (Ret.) David W. Sutherland,
US Army**

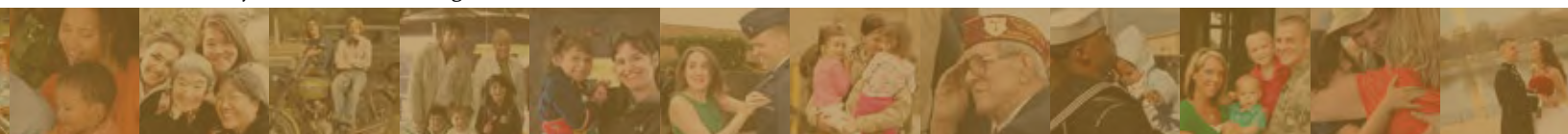
Co-founder and Chairman
Center for Military and Veterans
Community Services (Dixon Center)

Rowana Umbarger

President, Bargersville Town Council
Spouse of Major General R. Martin
Umbarger, Adjutant General, Indiana
National Guard
Past Chair, Indiana National Guard Family
Program Advisory Council
Manager, Roy Umbarger & Sons, Inc.

Raymond Weeks

Retired Executive Leader
Marine Veteran



SPECIAL THANKS TO OUR DONORS

CFF

FOUNDING DONOR

Dr. Lorene J. Burkhart

ADVOCATES

Mr. Tom B. Brademas, Sr.* (d)

In Memory of Virginia Gould

Butterfield, '40 HE (d)

Mrs. Ruth Daniel Chappell*

Ms. Helen Clark*

Debbie Myers Cook, C.F.P.*

Ms. Gladys V. Cox* (d)

Mr. Ken C. Decker*

Mrs. Kitty Decker*

Mrs. Georgia Higley Foster* (d)

Dr. Mary E. Fuqua* (d)

Mrs. Deanna L. Greve*

Mrs. Polly Greve*

Steve Hancock honoring

Ann C. Hancock*

Mrs. Betty Lou Jones Johnson* (d)

Ms. Jennie L. Jones*

Dr. Catherine L. Justice (d)

Mrs. Virginia K. Karnes* (d)

Mrs. Rhonda Swaim Kittle*

Mr. John R. Konkle*

Mrs. Linda J. Konkle*

Mrs. Betty A. Krejci

Dr. Jane S. Link*

Dr. Shelley M. MacDermid

Wadsworth

Mr. Michael MacDermid

Wadsworth

Mr. Bob L. Miles

Mrs. Joyce Berry Miles

Mrs. Marilyn R. Moore*

Dr. Margaret N. Murphy* (d)

Ms. Margaret A. Offenbacher*

Mrs. Jean Eichacker Pfaff* (d)

Mrs. Barbara Plochman* honoring

Mabel V. Poe Bauman

Mrs. Bonnie Graham Rabert*

Mrs. Nancy Hager Rand* (d)

Dr. Karyl A. Rickard,

Ph.D.,RD,FADA*

Dr. Eugene C. Rickard, Ph.D.*

Ms. Evelyn V. Schuber* (d)

Miss Suzann L. Shackleton*

Dr. Joanna B. Smith*

Mrs. Linda A. Smith*

Ms. Zelma Clanton Swaim (d)

Ms. Marthellen Ratcliff Van

Scoyoc* (d)

*Charter advocate; (d) Deceased

Mrs. Barbara A. Vawter*

Mrs. Margaret E. Waidelich*

Mrs. Patricia M. Wheaton (d)

Mrs. Dorothy D. Wiggins* (d)

Ms. Anna K. Williams* (d)

Mrs. Carol J. Wollert*

DONORS

Association of Leadership

Educators

Boston College Center for Work
and Families

Community Fdn of St Joseph

County

Elkhart Co. Ext. Homemakers

Extension Home Econ. Area 6

Ext. Specialists' Cour. Fund

Fidelity Invest. Char. Fund

Harris, Rothenberg Int'l, LLC

Hendricks Co. Ext. Homemakers

IEHA

Lange Advisors, Inc.

Leesburg Homemakers Club

Marshall Co. Ext. Homemakers

Milk Promotion Services of IN

OneAmerica Financial Partners

Prophets Rock Property Owners

Purdue Alumni Association

Purdue CES Education Fund

Dekalb County

Purdue CES Education Fund

Montgomery County

Purdue CES Education Fund

Whitley County

PU CES Educ. Fund/Kosciusko

Rickard Foundation Inc.

Sallie Mae

Mrs. Jeanne L. Abbott (d)

Ms. Marcile Allen (d)

Mrs. Cheryl L. Altinkemer

Dr. Kemal Altinkemer

Mrs. E. Earleen Alvarez

Ms. Cynthia E. Barnett

Lt. Col. (Ret.) Marcia Lou Beasley

Mr. Allen O. Beasley

Mrs. Doris J. Benko (d)

Mr. George Benko (d)

Ms. Katherine L. Benner (d)

Mr. Richard O. Berglund (d)

Mrs. Martha E. Bikin (d)

Charles E. Boonstra, M.D.

Mrs. Esther Conelley Boonstra

Ms. Mary P. Bowen

Ms. Mary F. Bower (d)

Ms. Betty J. Bowers

Mr. Richard D. Bowman

Mrs. Kathleen M. Bryant

Ms. Ruth M. Burrus

Mr. Henry G. Butler

Mrs. Dorothy J. Butler

Mr. Dyer Butterfield Jr. (d)

Mr. Rick A. Casassa

Mrs. Lisa J. Casassa

Mr. Gerald J. Cassidy

Mr. Arthur A. Chandler (d)

Mrs. Jane A. Chandler (d)

Mr. Jack E. Chappell

Mr. Gordon L. Cisar

Dr. Jane M. Clary

Mr. Brent E. Clary

Mrs. Betty Jane Clayton (d)

Mrs. Phyllis J. Combs (d)

Mr. Ronald E. Cook, C.P.A.

Dr. Karen E. Craig

Mr. Richard R. Craig

Ms. Mary Ellen Craig

Mrs. Cora D. Cramer

Mr. James P. Curry

Mrs. Carolyn J. Curry

Mrs. S. Ann Dhillon

Hon. Brent Ellis Dickson

Mrs. Jan Ellen Aikman Dickson

Dr. Travis E. Dorsch

Dr. Breanna Erin Studenka

Dr. A. Loraine Dunn

Mr. Larry E. Eifler

Mrs. Phyllis A. Eifler

Ms. Phyllis Ekovich

Dr. William D. Evers

Ms. Joanne Evers

Mrs. Evelyn M. Felker (d)

Mrs. Linda K. Fisher

Ms. Sandra J. Franz

Kendra L. Freeman

Mr. John H. Frischie

Mrs. Susan A. Frischie

Ms. Barbara K. Froke

Ms. Wilma J. Galema (d)

Ms. Shirley Bieler Gallagher

Mr. Stanley R. Smith

Dr. Joseph A. Gappa

Dr. Judith M. Gappa

Linda L. Garringer (d)

Mr. Richard E. Gelzleichter

Mrs. Patti O. Gelzleichter

Ms. Nola J. Gentry

Mr. Ned E. Derhammer

Mr. Dennis E. Gernhardt

Mrs. Jeanne L. Gernhardt

Mrs. Polly A. Gettinger

Mr. John R. Gettinger

Ms. Ginger Gifford

Mr. Conrad B. Gilliland (d)

Mr. Gary D. Gordon

Mrs. Janet R. Gordon

Dr. Dorothy A. Goss

Mr. Philip J. Gramelspacher

Mrs. Anne M. Gramelspacher

Mrs. Norma F. Green

Mr. Bill J. Greve

Mr. Harold D. Grotevant

Mrs. Susan Grotevant

Mr. Jack Hancock (d)

Mrs. Jane Hancock

Mr. Timothy J. Harmon

Mrs. Mariann Spangler Harmon

Ms. Eunice Hauck

Ms. Beverly A. Hollingsworth

Dr. Richard A. Hunt (d)

Mr. Warren K. Huntzinger

Mrs. Nancy J. Huntzinger

Mr. David Imig

Mrs. Gail Imig

Ms. Martha R. Johnson

Mr. John R. Jones

Mrs. Annetta R. Jones

Mr. Gregory D. Kelper

Mrs. Vickey L. Kelper

Dr. C. Robert Kenley

Mrs. Barbara Ann Kenley

Ms. Mary Ellen Kerber

Dr. Terrie Claire Kercher

Dr. Harrison L. Flint

Mr. Glen T. Kessler

Mrs. Patricia A. Kessler

Ms. Dorothy A. Konzelman

Mr. David P. Konzelman

Mrs. Karen L. Konzelman

Prof. Henry W. Kraebber, Jr., P.E.

Dr. Sharon L. Kraebber

Mr. James M. Krejci

Dr. Michael R. Ladisch

Dr. Christine M. Ladisch

Ms. Sandra L. Laing

Mr. Wade Alan Lange

Mrs. Candice Pierson Lange

Dr. Victor L. Lechtenberg

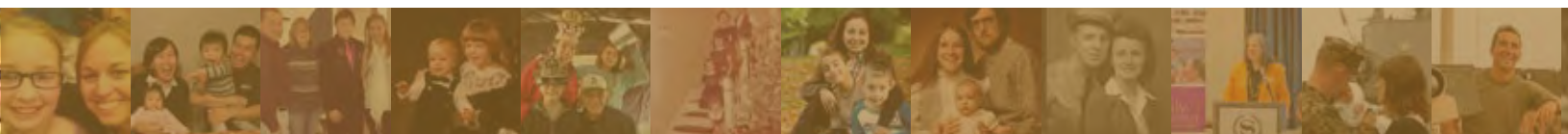
Mrs. Grayce A. Lechtenberg

Mrs. Mary Ann Lienhart-Cross

Mr. Michael L. Cross

Mr. James A. Link

Mr. R. J. Liter



"I chose to support the Center for Families because it encompasses all the disciplines of home economics and represents the core strength of our society. A family related genetically, by relationship, or community needs support. The Center for Families is one of the best ways to support families. All the best for a well-deserved celebration." — Bonnie Graham Rabert, Center for Families Advocate

Families Advocate

Mrs. Amy M. Liter
 Mrs. Anna P. Lowe (d)
 Mr. Thomas R. Lugar
 Mrs. Sarah S. Lugar
 Mrs. Nancy M. MacKenzie
 Mr. Robert H. Madison
 Dr. Kenneth B. Meyer
 Mrs. Barbara Burkett Meyer
 Mrs. Mary M. Miller (d)
 Mrs. Mary E. Myers (d)
 Mr. Hans R. E. Naumann
 Mrs. Irma A. Naumann
 Mr. Louis Nichols
 Mrs. Louise Nichols
 Mr. Philip G. Nicole
 Mrs. Joyce A. Nicole
 Dr. Lynette J. Olson
 Mrs. Charlotte A. Otto
 Mr. Robert R. Otto
 Mrs. Ann M. Parsons
 Mr. William H. Pfaff (d)
 Ms. Deborah L. Potts
 Mrs. Elizabeth Kent Puett (d)
 Mrs. Jean A. Reed (d)
 Mr. Richard E. Reel
 Ms. Mary Beth Reel
 Mr. John M. Remster Jr. (d)
 Mrs. Emily Ann Remster
 Ms. Betty Rhodes
 Mr. Jerry D. Ricks
 Mrs. Janeth D. Ricks
 Mr. Marc-Carroll Rigel
 Dr. Barbara A. Riggs
 Mr. Randy Riggs
 Mrs. Diane Aileen Roell-Paris
 Mr. Kermit J. Paris
 Ms. Sherry Rose
 Rev. Ruth C. Ross
 Mr. David E. Rudat (d)
 Mr. Robert D. Sampson
 Mrs. Nancy J. Sampson
 Mrs. Barbara M. Sanborn
 Mr. Mark E. Sanborn
 Mr. Robert L. Scarafia
 Mrs. Ann P. Scarafia
 Mr. Richard L. Schuchardt
 Ms. Mary E. Schuman
 Dr. Rona Lee Schwarz
 Dr. Leroy B. Schwarz
 Mr. Michael A. Severin
 Mrs. Martha McHie Severin
 Ms. Catherine A. Seymoure
 Ms. Phyllis Shambaugh
 Mr. Robert Shebel
 Mrs. Lou Ann Seibel
 Mrs. Martha L. Shireman (d)

Ms. Colleen M. Shook
 Ms. R. Lynn Silver
 Ms. Nancy N. Sindors
 Mr. Everett Smith Jr. (d)
 Mr. Herbert W. Smith (d)
 Mrs. Marjorie B. Smith (d)
 Ms. Susan M. Smith
 Dr. Mary Ruth Snyder
 Ms. Melissa R. Spillers
 Ms. Doris M. Stevenson
 Ms. Priscilla S. Stoyanof
 Mr. David Roche
 Mr. Noel W. Stuckman
 Mrs. Sandra Clarkson Stuckman
 Mrs. Mary Sundheimer
 Ms. Roberta E. Sward
 Mrs. Barbara Thanos (d)
 Mrs. Gail D. Tidemann
 Ms. Betty V. Tillett (d)
 Mrs. Margaret P. Titus
 Mr. Gary W. Troutman
 Mrs. Penelope J. Troutman
 Mrs. Helen J. Turley
 Dr. Clifford M. Vogt
 Mrs. Clara S. Vogt
 Dr. Henry A. Wadsworth
 Dr. Emily M. Wadsworth
 Ms. Jan C. Wahl
 Dr. Charles J. Waidelich
 Ms. Helen M. Watts Brown
 Mr. P. Williams
 Mr. Dean L. Wilson
 Mrs. Susann M. Wilson
 Mrs. Margaret P. Wingo
 Mr. Mark Winslow
 Ms. Reni B. Winter in honor of
 Jerry Joseph Ohana
 Mrs. Carol J. Winzeler
 Mr. John H. Winzeler
 Ms. Laura Wirkkala
 Mr. R. Duane Wolheter
 Mrs. Julia E. Wolheter
 Mr. Gerald D. Wollert
 Ms. Helen L. Wortley (d)
 Ms. Joan B. Younce
 Ms. Linda S. Young

M F R I

Advantage Marketing Inc.
 NW IND National Football Fnd.
 Amer. Inst. of Biological Sciences
 Phillips 66 Company
 Nampirg Foundation
 Mr. Christopher R. Adams
 Mrs. Mary R. Adams
 Ms. Francesca Adler-Baeder

Dr. John C. Aplin, Jr.
 Mrs. Gloria A. Aplin
 Mr. Robert E. Beale
 Mrs. Virginia Son Beale
 William Boyd Bigler, II, PMP
 Mr. Robert E. Bonwell
 Mrs. Susanne Bonwell
 Ms. Kathy M. Broniarczyk
 Col. (Ret.) Mark N. Brown
 Mrs. Lynne A. Brown
 Mr. John M. Butler
 Mr. Jean-Francois Cardin
 Dr. Lawrence E. Carosino
 Mr. David Cohen
 Mrs. Linda L. Conner
 Mr. Samuel D. Conner
 Dr. John J. Contreni Jr.
 Mrs. Margarita L. Contreni
 Mr. Norman R. Cooney
 Mr. Ryan M. Core
 Ms. Lynn V. Davis
 Mr. Ronald Davis
 Ms. Christine A. Durbin
 Dr. Stephen M. Durbin
 Mr. John F. Ferguson
 Mrs. Beverly Ferguson
 Ms. Shirli Flack
 Ms. Christy L. Flynn
 Mr. Anthony Patrick Gillund
 Ms. Karin A. Gillund
 Ms. Risa J. Greendlinger
 Ms. Christina Groark
 Capt. Maria Harbeson, Retired
 Ms. Jacqueline A. Harris
 Mr. Jeffrey L. Hemmer
 Dr. John H. Hollenback
 Ms. Elizabeth Claire Hudson
 Mr. Jay F. Hutson
 Mrs. Rene K. Jacobson
 Mr. Mike Johnson
 Mrs. Beth Johnson
 Major Joshua Branden Jordan
 Mrs. Heather D. Keaton
 Mr. Joshua M. Kikta
 Mrs. Melissa L. Kikta
 Mr. Robert F. Kirchubel
 Mrs. Linda Kirchubel
 Dr. Andrew Koch
 Mrs. Barbara W. Kroemer
 Ms. Kimberly LaComba
 Capt. Kevin C. Landeck
 Dr. Victor L. Lechtenberg
 Mrs. Grayce A. Lechtenberg
 Ms. Kyung Hee Lee
 Ms. Patricia Lester
 Dr. Jane S. Link

Mr. James A. Link
 Mr. Timothy B. Luzader
 Mrs. Sally L. Luzader
 Mr. Michael MacDermid
 Wadsworth
 Dr. Shelley M. MacDermid
 Wadsworth
 Mr. Bob L. Miles
 Mrs. G. Joyce Miles
 Mr. Norbert J. Moeller
 Mr. Edward J. Moore
 Col. (Ret.) William John Morrow, Jr.
 Mrs. Constance Morrow
 Brenda L. Moss
 Col. J. Christopher Moss
 Mr. Glen Murphy
 Ms. Stephanie Nicholson
 Mr. Robert C. Owens
 Mr. David A. Owens
 Dr. John C. Parker
 Mrs. Jamie K. Parker
 Ms. Angela Pereira
 Mrs. Mary A. Perigo
 Mr. David Chase Phillips
 Mrs. Natalie R. Phillips
 Mrs. Angela Phillips Diaz
 Ms. Patricia Raskin
 Mr. Donald J. Reed
 Mr. Chad W. Robinson
 Mrs. Patricia E. Russell
 Mr. Morgan Sammons
 Mr. Trooper Sanders
 Colonel Michael A. Silver,
 USAF (Ret.)
 Mrs. Karen L. Silver
 Mrs. Jamie E. Simek
 Mr. Michael J. Simek
 Ms. Mary E. Simon
 Ms. Nora Spinks
 Dr. Valerie A. Stander
 Mr. Samuel W. Staples
 Mrs. Gertrude A. Staples
 Mr. Donald K. Steele
 Mrs. Sharon K. Steele
 Dr. Sara J. Stein Koch
 Ms. Martina M. Sternberg
 Mr. Ernest S. Stoops
 Mr. Harry D. Tunnell IV
 Mr. James L. Valrance
 Dr. Susie Vogel
 Mr. Raymond Weeks
 Mr. Scott D. Witte
 Mr. Paul Eric Woods
 Mr. Jon Wright
 Ms. Bi Zhao
 Mr. Huilong Zhuo



SPECIAL THANKS TO OUR GENEROUS SPONSORS



THE CENTER FOR FAMILIES AND MFRI ARE PART OF
THE DEPARTMENT OF HUMAN DEVELOPMENT AND FAMILY STUDIES WITHIN
THE COLLEGE OF HEALTH AND HUMAN SCIENCES AT PURDUE UNIVERSITY.



Hanley Hall, Room 210 • 1202 West State Street • West Lafayette, IN 47907

www.purdue.edu/hhs/cff • 765-494-9878 • cff@purdue.edu

www.mfri.purdue.edu • 765-496-3403 • mfri@purdue.edu